

YEGREENA

NOROO

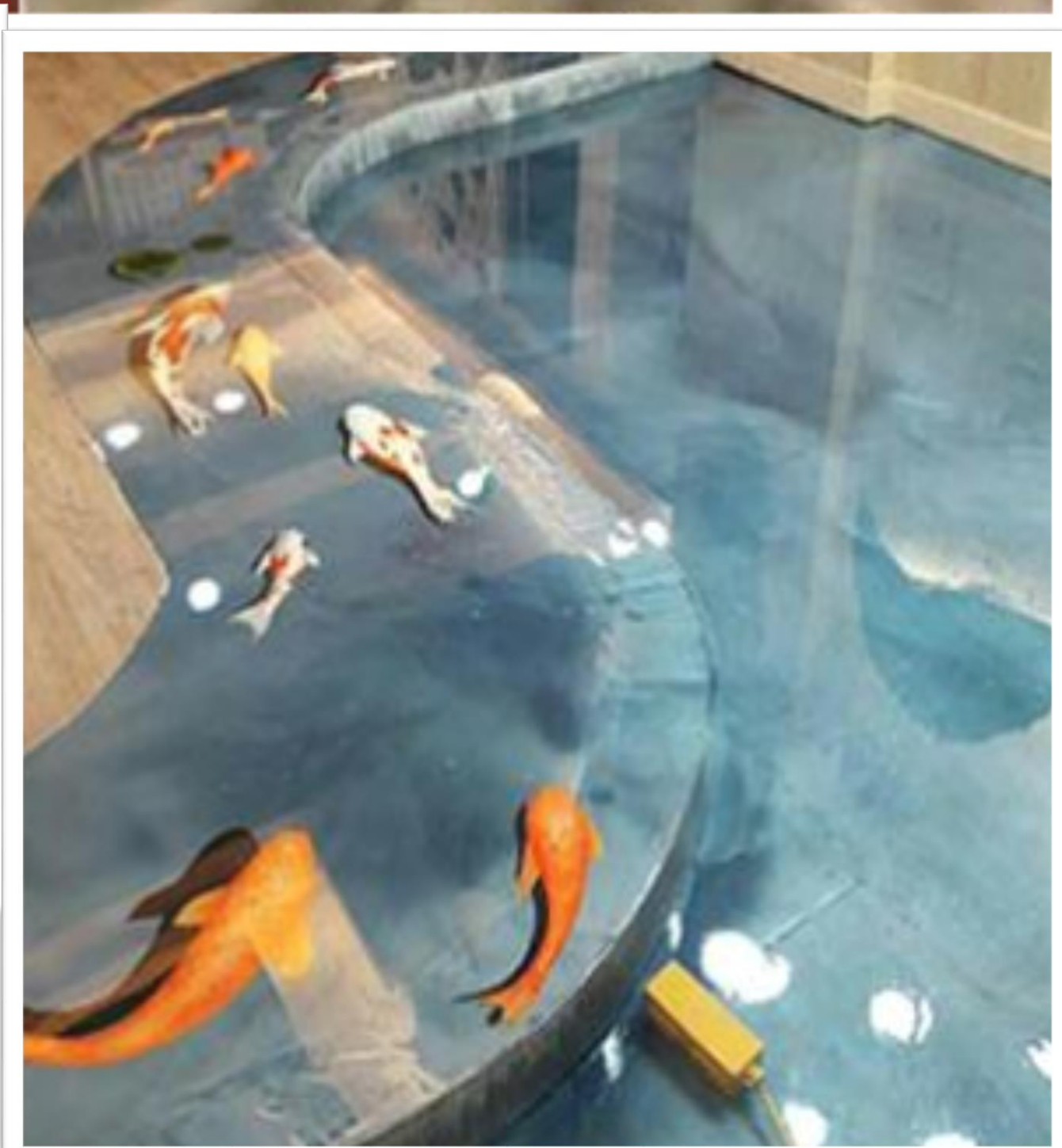
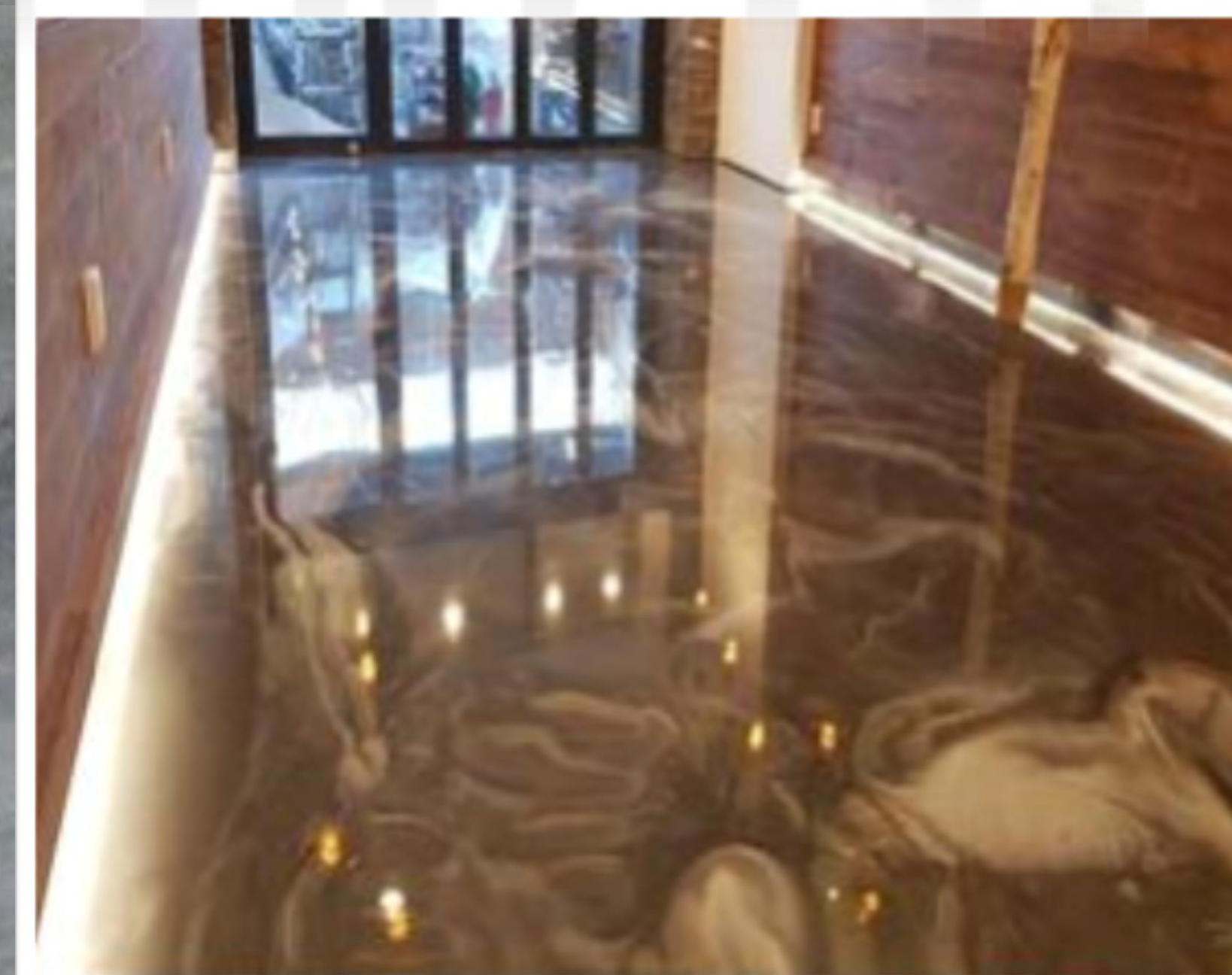
노루 페인트

메탈릭 진주 펄이 만들어내는
신비로운 조화, 감각적 스타일링이
가능한 신개념 인테리어 바닥재

YEGREENA COLOR FLOOR

THE ART OF METALLIC EPOXY

- Beautiful 16 various color shades
- Present your own presentation
- Excellent physical & chemical properties
- Self-leveling, easy to work





The mysterious aurora drawn on your floor Special design for the special space

YEGREENA COLOR FLOOR IS A NEW CONCEPT OF INTERIOR FLOORING COATING USING SPECIAL METALLIC PEARL PIGMENT FOR A SOPHISTICATED AND BEAUTIFUL LOOK.

The combination of transparent epoxy and pearl pigment enables customers to have their own various patterns and beautiful color shades for their own tastes. When it comes to workability, it features self-leveling(smoothness) as well as fast curing to maximize user's convenience. For properties as floorings the product has secured excellent hardness, adhesion, durability, resistance to chemicals, dust, abrasion for the long-lasting life span to maintain the appearance longer. Eventually it creates beautifully colored unique styles on your own demand and maximize the value of your flooring to the highest degree.

| SUBSTRATE

ON CONCRETE
SOLVENTFREE EPOXY FOR YOUR INTERIOR DESIGN

| APPLICATIONS

RESTAURANT, CAFÉ, HAIR SALON, HOTEL LOBBY, SHOPPING MALL



16
Various colors



Unique presentation
on your demand



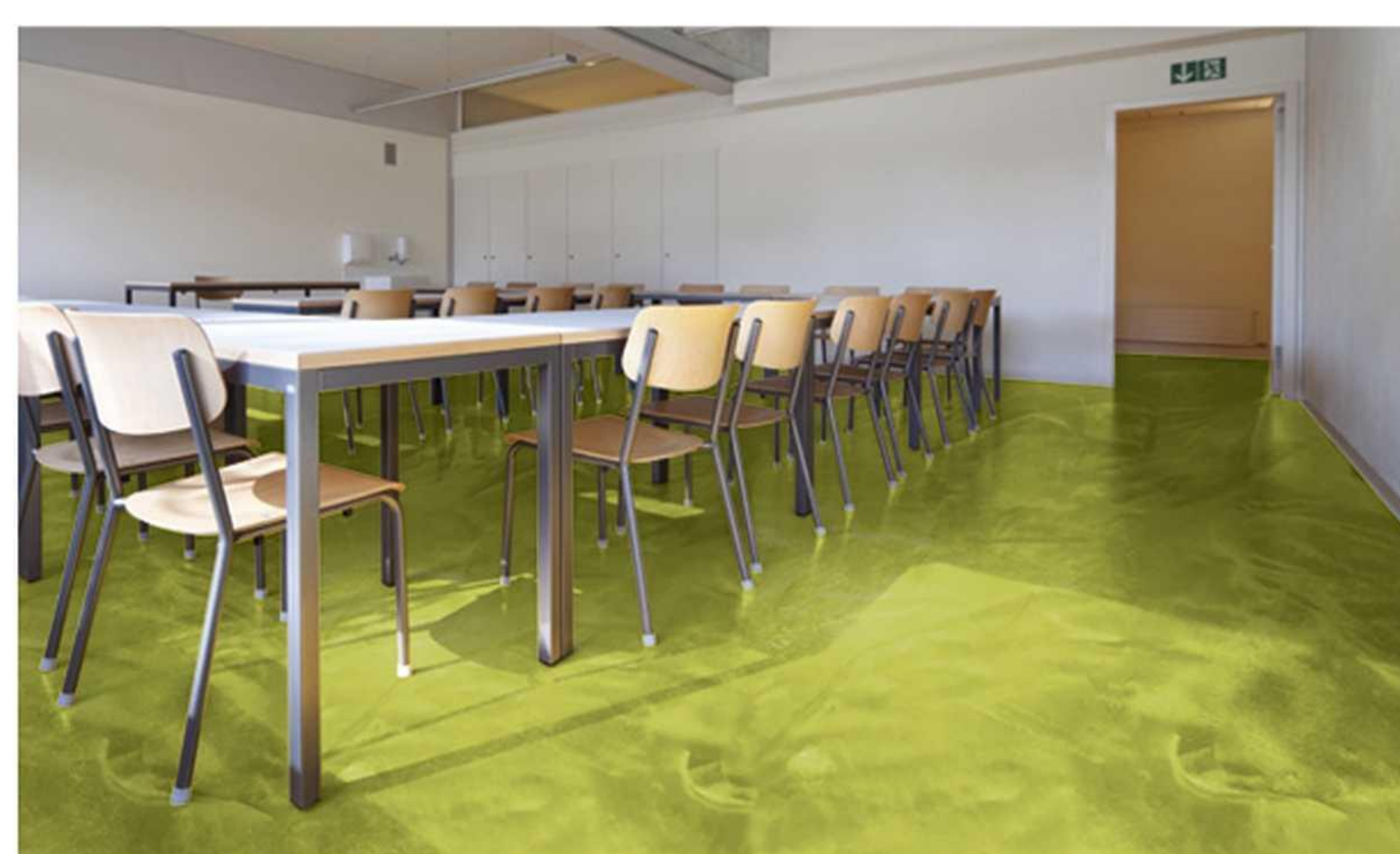
Fast curing



Self-leveling



Adhesion, Durability
Resistance to chemicals and dust



YEGREENA COLOR FLOOR, THE ART OF METALLIC EPOXY FLOOR



FLASH WHITE



SILVER GREY



LIGHT GREY



BLACK PEARL



CAMBRIDGE BLUE



OCEAN BLUE



SKY BLUE



MAGIC BLUE



ROYAL GOLD



SATIN BRONZE



BRONZE BROWN



DARK BROWN



OLIVE YELLOW



DARK GREEN



WINE RED



DARK PURPLE



YEGREENA COLOR FLOOR is a solvent-free epoxy flooring using metallic pearl pigments composed of epoxy resin and modified amine with fast curing, self-leveling and excellent physical properties such as adhesion, durability, dust resistance and chemical resistance. Especially it is designed to have beautiful and aesthetic looks for your value of space to be maximized.

YEGREENA Color Floor primer

DATA

- Type : Epoxy / Modified amine (2 components)
- Thinning ratio : N/A
- Specific gravity : About 1.1
- Theoretical coverage : 0.18 kg/m² (150 μm)
- Solid volume ratio : 90 ± 3 %
- Color/gloss : Transparent/Glossy
- DFT : 150 μm
- Mixing ratio : Base(A) : Hardener(B) = 2.5 : 1 (by weight)
- Packing : Base 4.29Kg , Hardener 1.71 Kg

Drying time

Temperature	5 °C	20 °C	30 °C
Set to touch	8 hours	3 hours	2 hours
Dry hard	20 hours	15 hours	12 hours
Over-coat (Min)	72 hours	48 hours	24 hours
Over-coat (Max)	9 days	4 days	3 days
Pot life	30 minutes	15 minutes	7 minutes

YEGREENA Color Floor topcoat

DATA

- Type : Epoxy / Modified amine (2 components)
- Thinning ratio : N/A
- Specific gravity : About 1.1
- Theoretical coverage : 2.29 kg/m² (2.0mm)
- Solid volume ratio : 96 ± 3 %
- Color/gloss : Transparent/Glossy
- DFT : 2~3 mm
- Mixing ratio : Base(A) : Hardener(B) = 2 : 1 (by weight)
- Packing : Base 9Kg, Hardener 4.5Kg

Drying time

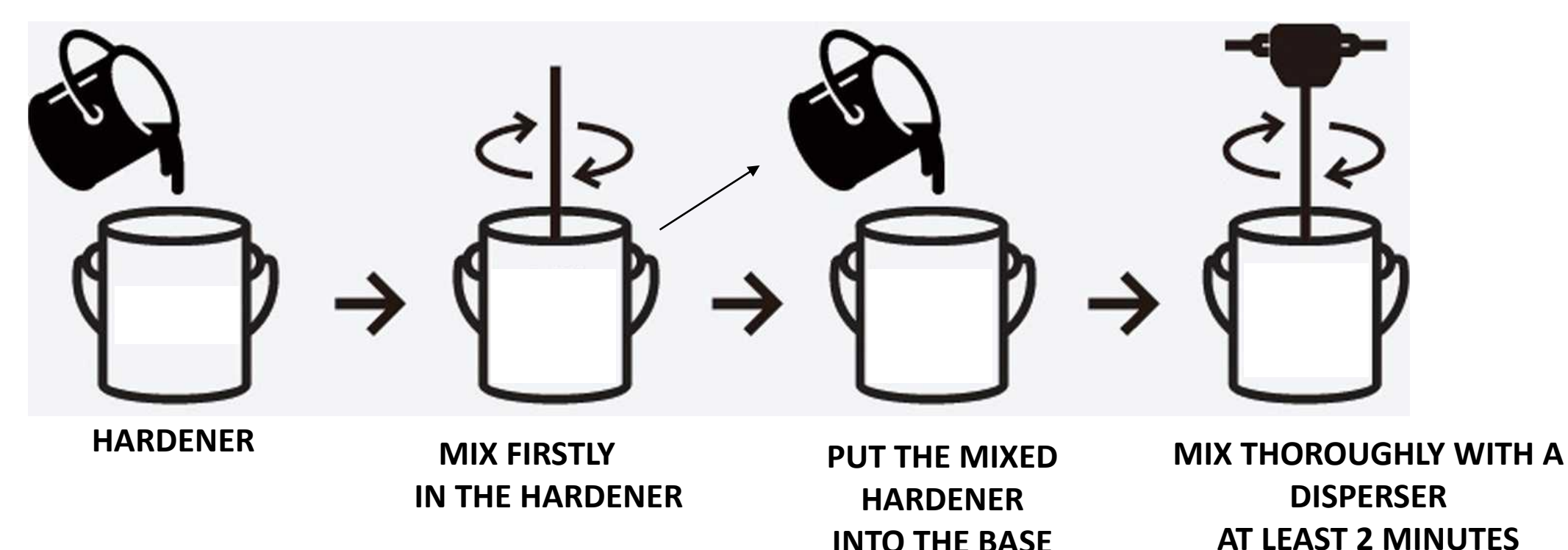
Temperature	5 °C	20 °C	30 °C
Set to touch	10 hours	4 hours	3 hours
Dry hard	36 hours	30 hours	24 hours
Over-coat (Min)	72 hours	48 hours	24 hours
Over-coat (Max)	9 days	4 days	3 days
Pot life	60 minutes	30 minutes	15 minutes

- The information and data given herein are based on the test results and experimental basis of NOROO but might vary with the actual working environment and applying condition.
- Recoat after its re-coatable time might cause defective appearance. Please do the surface treatment again for the recoat.



HOW TO MIX YEGREENA COLOR FLOOR

- 1> PUT THE PEARL PIGMENT (200g) IN THE HARDENER, MIX FIRSTLY.
- 2> PUT THE MIXED HARDENER INTO BASE AND MIX THOROUGHLY USING A DISPERSER FOR MORE THAN 2 MINUTES.



1. Surface treatment

Completely remove the grease, moisture, sand, dust, laitance and other foreign matters from the surface and maintain surface smooth and fully dried. If the surface has foreign substances, dust, blemishes, protruded spots, pinholes and sagging might occur.

2. YEGREENA Color Floor primer (BASE+HARDENER+PEARL PIGMENT)

You can put the pearl pigment(200g) into the YEGREENA Color Floor primer hardener and do the first mix by a disperser. Then add the mixed hardener into the base and mix thoroughly with a disperser for at least 2 minutes. Then pour it on the floor and apply promptly (the curing time is fast) to prevent it from gelling. 20% tolerance for the amount of pearl pigment is allowed for hiding power.
 - If there are any cracks or fissure, you should fill them in with epoxy putty. * NOROO's product : NORUSEAL 6600

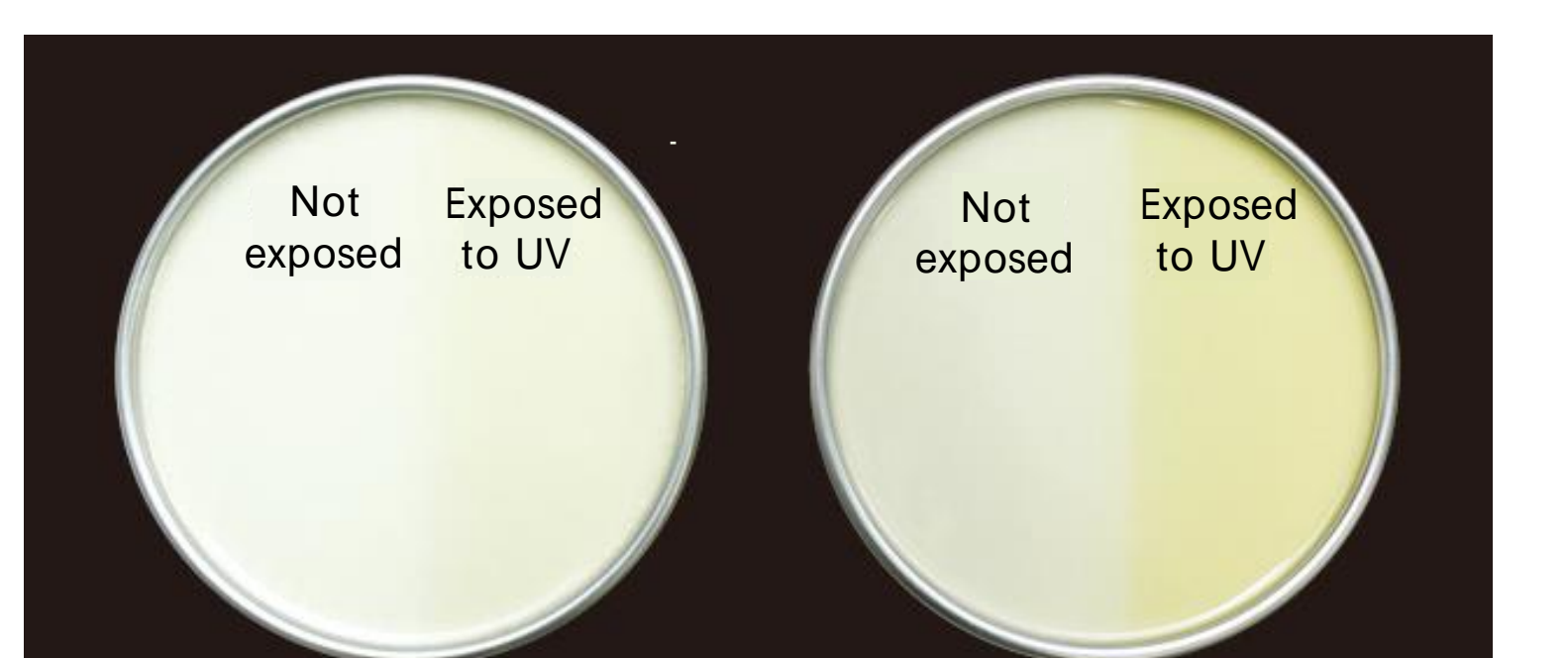
3. YEGREENA Color Floor topcoat (BASE+HARDENER+PEARL PIGMENT)

You can put the pearl pigment(200g) into the YEGREENA Color Floor topcoat hardener and do the first mix by hand. Then add the mixed hardener into the base and mix thoroughly with a disperser for at least 2 minutes. Then you can pour it on the floor; spread with rake, trowel starting with the edges. **You can do the secondary touch-up works for your own specific patterns by additional works with a rake or trowel after 30 minutes.** (This coating is designed to fast curing. Keep pot life and curing schedule in mind.)

※ Caution

You must use YEGREENA Color Floor primer and topcoat . If you use a general epoxy lining coating, it is not able to achieve the beautiful patterns because the coating and color pearl pigments are not compatible.

UV exposure test



YEGREENA Color Floor Epoxy lining transparent coating

Compatibility test



YEGREENA Color Floor Epoxy lining transparent coating