

BLACKTHANE AP / SKIN SHEET AP-2000DS(V)

Complete waterproofing without exposure! A dual waterproofing system developed with enhanced physical performance and optimized for non-exposed applications.

By combining the advantages of urethane waterproofing and sheet waterproofing, this method overcomes the limitations of conventional systems and is optimized for non-exposed waterproofing applications, new construction projects, and parking deck slabs. It integrates an asphalt urethane coating with a double-sand asphalt sheet to create a complete waterproof layer before concrete placement. This one-component elastic urethane coating offers excellent material properties and easy application, and it forms part of a dual waterproofing system that fully meets the KS standard requirements.

Applications Creating a durable non-exposed waterproof layer beneath concrete structures and general buildings.



Urethane and Asphalt Combination!

A dual waterproofing system that combines a one-component asphalt urethane coating with a double-sand sheet.



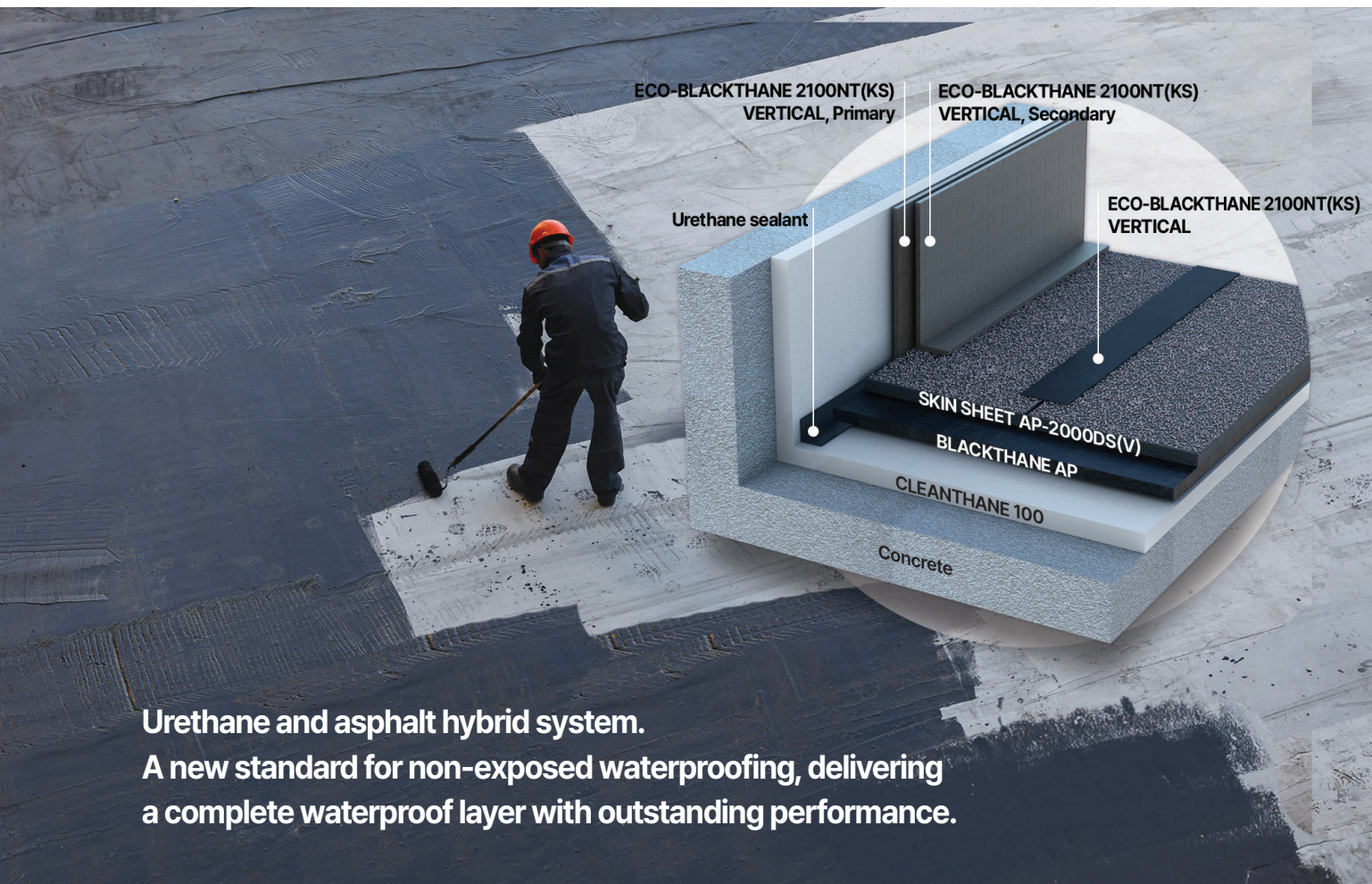
Complete Waterproofing and Excellent Properties!

A next-generation urethane and asphalt dual waterproofing system offering both efficiency and long-term durability.



Easy Application!

The optimized combination of a one-component waterproofing coating and a double-sand sheet maximizes installation efficiency.



Urethane and asphalt hybrid system.
A new standard for non-exposed waterproofing, delivering a complete waterproof layer with outstanding performance.

BLACKTHANE AP

Category	Description
Paint type	One-component polyurethane resin containing asphalt
Thinner	DR-700, DR-700L, DR-790 (no dilution)
Theoretical Coverage	1.30 ± 0.05kg/m ² (based on 1mm)
Thickness of dried film	1mm
Tensile strength / Tear strength	More than 2.0N/mm ² / More than 12.8N/mm
Elongation / Hardness	More than 550% / Shore A 60 ± 10
Color	Black
Storage and preservation	6 months (indoor storage at 5-30°C)

SKIN SHEET AP-2000DS(V)

Category	Description
Paint type	Polyester long-fiber base impregnated with SBS-modified asphalt, coated with sand on both sides
Tensile strength	More than 5N/mm ²
Elongation	More than 15%
Tear strength	More than 20N/mm
Heat resistance	5mm or less
Flexural performance	-15°C / No cracks shall occur
Thickness	2mm
Dimensions	1m x 10m (width x length)

BLACKTHANE AP is a one-component asphalt-modified elastic urethane coating that provides excellent material performance, superior adhesion, and high application efficiency. The SKIN SHEET AP-2000DS(V), coated with sand on both sides, offers outstanding resistance to cold and heat, with a well-balanced combination of tensile strength and elongation. Together, they deliver reinforced waterproofing performance for demanding construction environments.

Key Benefits of BLACKTHANE AP / SKIN SHEET AP-2000DS(V)!



Complete waterproofing structure!

The coating and sheet form a dual waterproofing layer that significantly enhances structural durability and effectively blocks moisture infiltration, providing reinforced waterproof performance.



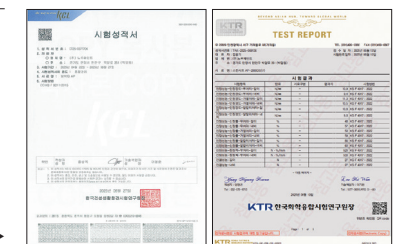
Easy application!

The improved 2mm sheet enhances workability and maximizes installation efficiency across the entire process, ensuring consistent quality.



Excellent properties!

Strong urethane adhesion and elongation improve structural adaptability, while the sheet's durability reinforces the system to ensure long-term stability.



BLACKTHANE AP KS certificate / Skin Sheet AP KS certificate ▶